

# PIONEER SERIES

PIONEER R2 TFT G6485TFT

R.R.P.

EAN: 8431284777012

Folding treadmill with electric incline for those who want to start walking or jogging with a stable and safe treadmill that incorporates a touch screen on which you can enjoy your favourite music and videos thanks to the Touch&Fun technology.



Monitor

### Measurements:

Distance, Time, Speed, Calories, Pulse, Inclination

- Max. user weight: 100Kg
- Weight: 62Kg
- Dimensions: 162cm x 74cm x 146cm
- Power: 2,5CV/1,25CV
- Speed: 1-16Km/h
- Running surface: 125x45cm



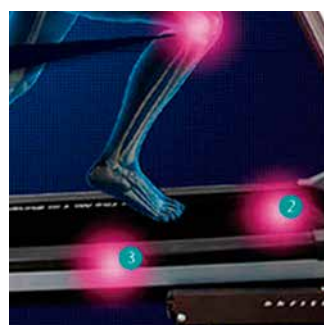
### TOUCH&FUN TECHNOLOGY

Increase the fun during your workouts with the virtual tours or your favourite music and videos.



### FULLY CUSTOMIZED SOFTWARE

Enjoy a fully customized software, with the capability to adapt the best training programs through a TFT touchscreen.



### 6 ELASTOMERS

Thanks to the damping of the 6 elastomers your joints do not suffer with your workout.



### FOLDING

Fold and store your machine easily.



Specs	Pioneer R2 TFT G6485TFT
Use frequency	Regular
Maximum user weight	100Kg
Power (peak/continue)	2,5CV/1,25CV
Speed	1-16Km/h
Max. electrical elevation	0-12
ECO mode	Yes
Speed instant keys	Yes
Elevation instant keys	Yes
Running area (L x W)	125x45cm
Damping system	6 elastomers
Contact heart rate measuring	Yes
Fan	Yes
Soft Drop System (SDS)	Yes
Transport wheels	Yes
Length	162cm
Width	74cm
Height	146cm
Weight	62Kg
Foldable	Yes
Programs	
Preset programs (Prg)	36
Random program (RP)	No
Customizable profiles (uprg)	1
Fitness test (FT)	No
Heart rate control program (HRC)	1
Recovery Program (RT)	No
Body Fat test (BF)	Yes
Monitor	
Screen	TFT 9"
Monitor with HIIT by BH training scheme	No
Universal holder for Smartphones and/or tablets	Yes
Telemetric heartrate	Yes
Bluetooth heartrate	No
iConcept	No

 Notes